

2200 W TOWNLINE RD

PEORIA, IL 61615



RE/MAX
COMMERCIAL[®]
TRADERS UNLIMITED

FOR SALE | 2200 W Townline Rd

ASKING PRICE: \$2,575,000



EXECUTIVE SUMMARY

Prime commercial real estate located in the North Peoria Industrial Park in Peoria, IL. This 22,820 SF flex building is currently divided into 5 units with 3 long term tenants and 2 new vacancies. The vacant units total 9,280 SF and were built out for offices/GSA. This location offers close, easy access to major highways and interstate, and a growing business community in North Peoria/Dunlap. With its strategic position in the industrial park, the property presents an excellent opportunity for owners to house their business, or for investors.



22,820
TOTAL SF



**MULTI
TENANT
INDUSTRIAL**
PROP TYPE



5
UNITS



I-1
ZONING

CLICK FOLDER FOR LINK TO

- Property Photos & Videos
- Floorplans
- County Records



JUSTIN BALL
JUSTIN.BALL@REMAX.NET
309.323.0399

JESSICA BALL
JESSICABALL@REMAX.NET
309.363.2929

RE/MAX
COMMERCIAL
TRADERS UNLIMITED

FOR SALE | 2200 W Townline Rd

PROPERTY INFORMATION

ADDRESS	2200 W Townline Rd
CITY / STATE / ZIP	Peoria, IL 61615
PARCEL ID(s)	14-06-201-012
PROPERTY TYPE	Industrial, Office, Retail, Investment, Warehouse
ZONING	I-1
TOTAL BUILDING SIZE (SF)	22,820 SF
TOTAL UNITS	5
DRIVE-IN DOORS	6
DOCK DOORS	2

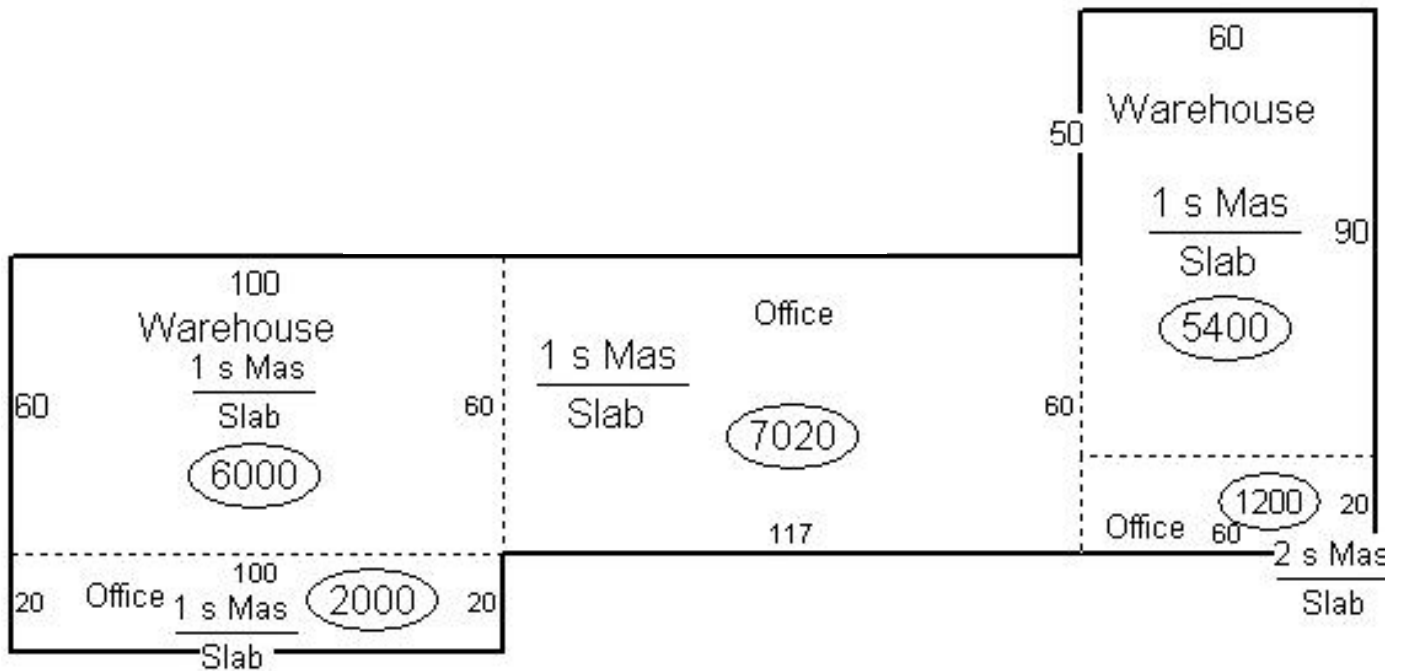


JUSTIN BALL
JUSTIN.BALL@REMAX.NET
309.323.0399

JESSICA BALL
JESSICABALL@REMAX.NET
309.363.2929

RE/MAX
COMMERCIAL
TRADERS UNLIMITED

GIS FLOORPLAN SKETCH



FOR SALE | 2200 W Townline Rd

EXTERIOR PICTURES



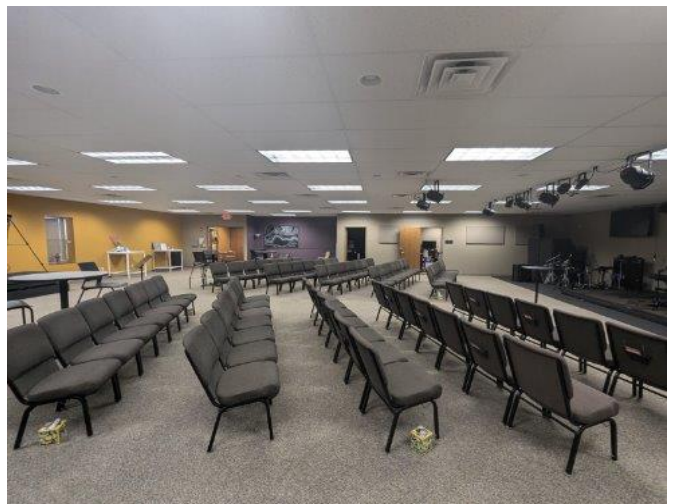
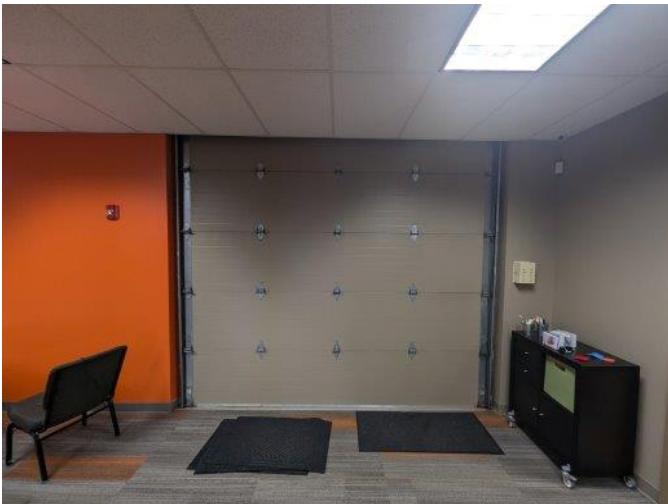
JUSTIN BALL
JUSTIN.BALL@REMAX.NET
309.323.0399

JESSICA BALL
JESSICABALL@REMAX.NET
309.363.2929

RE/MAX
COMMERCIAL[®]
TRADERS UNLIMITED

FOR SALE | 2200 W Townline Rd

INTERIOR PICTURES - UNIT 2220



JUSTIN BALL
JUSTIN.BALL@REMAX.NET
309.323.0399

JESSICA BALL
JESSICABALL@REMAX.NET
309.363.2929

RE/MAX
COMMERCIAL[®]
TRADERS UNLIMITED

FOR SALE | 2200 W Townline Rd

INTERIOR PICTURES - UNIT 2210



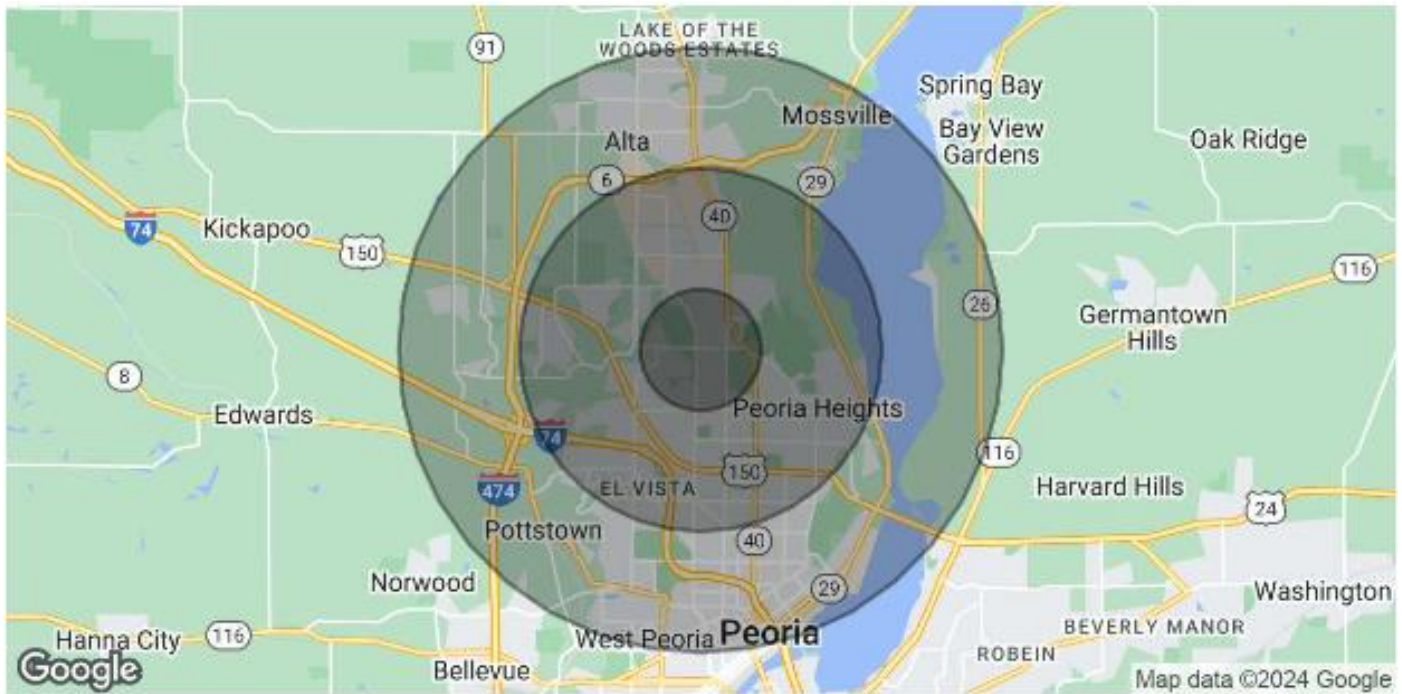
JUSTIN BALL
JUSTIN.BALL@REMAX.NET
309.323.0399

JESSICA BALL
JESSICABALL@REMAX.NET
309.363.2929



FOR SALE | 2200 W Townline Rd

PEORIA AREA DEMOGRAPHICS



POPULATION	1 MILE	3 MILES	5 MILES
Total Population	7,961	56,008	112,408
Average Age	43	42	40
Average Age (Male)	41	40	38
Average Age (Female)	45	44	41

HOUSEHOLDS & INCOME	1 MILE	3 MILES	5 MILES
Total Households	3,613	25,801	48,171
# of Persons per HH	2.2	2.2	2.3
Average HH Income	\$81,064	\$79,136	\$84,840
Average House Value	\$184,218	\$167,525	\$177,845

Demographics data derived from AlphaMap

JUSTIN BALL
JUSTIN.BALL@REMAX.NET
309.323.0399

JESSICA BALL
JESSICABALL@REMAX.NET
309.363.2929

RE/MAX
COMMERCIAL®
TRADERS UNLIMITED



2200 W TOWNLINE RD
PEORIA IL, 61615

RE/MAX
COMMERCIAL[®]

TRADERS UNLIMITED



JUSTIN BALL
Broker, REALTOR
Tel: (309) 323-0399
Justin.Ball@Remax.net
Lic #475.175281



JESSICA BALL
Broker, REALTOR
Tel: (309) 363-2929
JessicaBall@Remax.net
Lic #475.175281

All information contained herein is deemed reliable but not guaranteed.
Each office is independently owned and operated.
Office: 3622 N Knoxville Avenue, Peoria, IL 61603