

RE/MAX

COMMERCIAL

For Sale Improved Parking Lot



**323 N.E. Monroe
Peoria, IL**

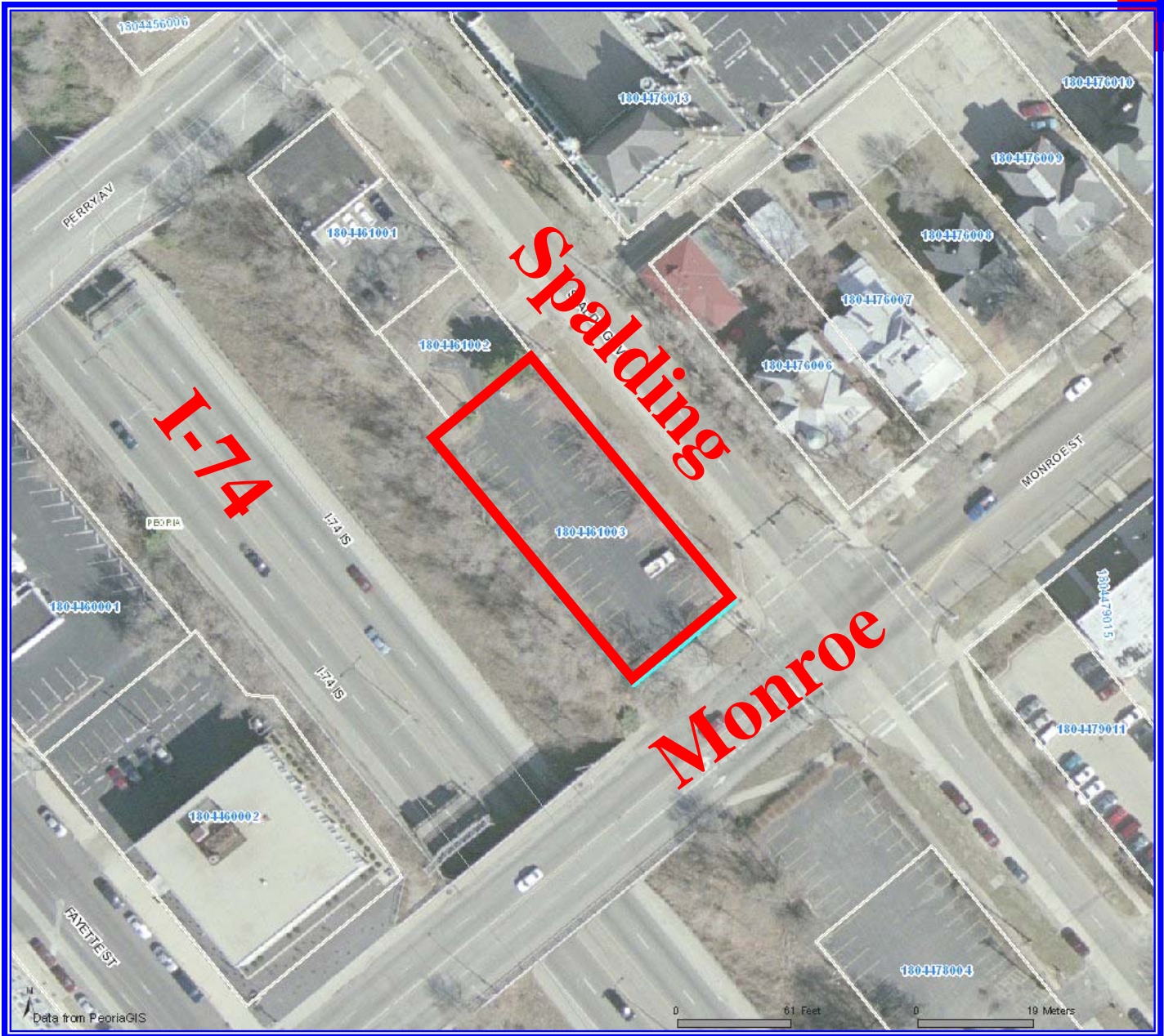


Jim Grube
309-696-6110
jgrube@remax.net

RE/MAX Unlimited Commercial Division
3622 N. Knoxville Avenue
Peoria, IL 61603
Office: 309-687-5080
Fax: 309-687-5078
www.commercialpeoria.com



Information contained herein has been obtained from the property owner or from other sources that we deem reliable. We have no reason to doubt its accuracy, but we do not guarantee it. Each Office Is Independently Owned and Operated.

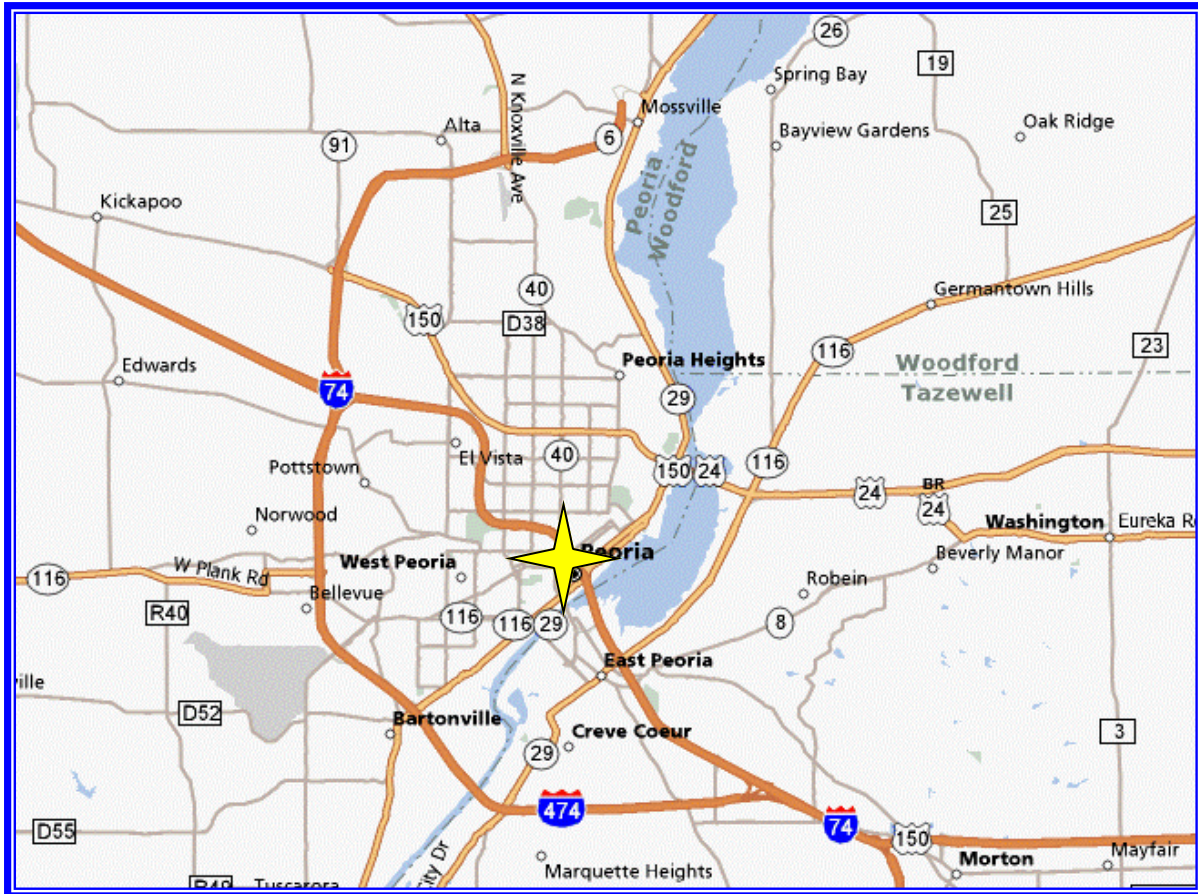


- **Paved corner lot**
- **34 Parking Spaces**
- **Corner of Spalding & Monroe**
- **Adjacent to I-74**
- **Four blocks from downtown Peoria**
- **\$139,900**

RE/MAX

COMMERCIAL

323 N.E. Monroe Peoria, IL



RE/MAX

COMMERCIAL

RE/MAX Unlimited Commercial Division

3622 N. Knoxville Avenue

Peoria, IL 61603

Office: 309-687-5080

Fax: 309-687-5078

www.commercialpeoria.com



COMMERCIAL
Real Estate



Information contained herein has been obtained from the property owner or from other sources that we deem reliable. We have no reason to doubt its accuracy, but we do not guarantee it. Each Office Is Independently Owned and Operated.