

RE/MAX

COMMERCIAL

For Lease Office & Warehouse Suites



Independence Court Business Park Washington, IL



Michael O'Bryan
President
309-687-5069
michaelobryan@remax.net

RE/MAX Unlimited Commercial
3622 N. Knoxville Avenue
Peoria, IL 61603
Office: 309-687-5080
Fax: 309-687-5078
www.commercialpeoria.com



Information contained herein has been obtained from the property owner or from other sources that we deem reliable. We have no reason to doubt its accuracy, but we do not guarantee it. Each Office Is Independently Owned and Operated.

**Suite 1230 - 1,440 Sq Ft
bay and 900 Sq Ft
office. \$1,200 Month +
utilities.**

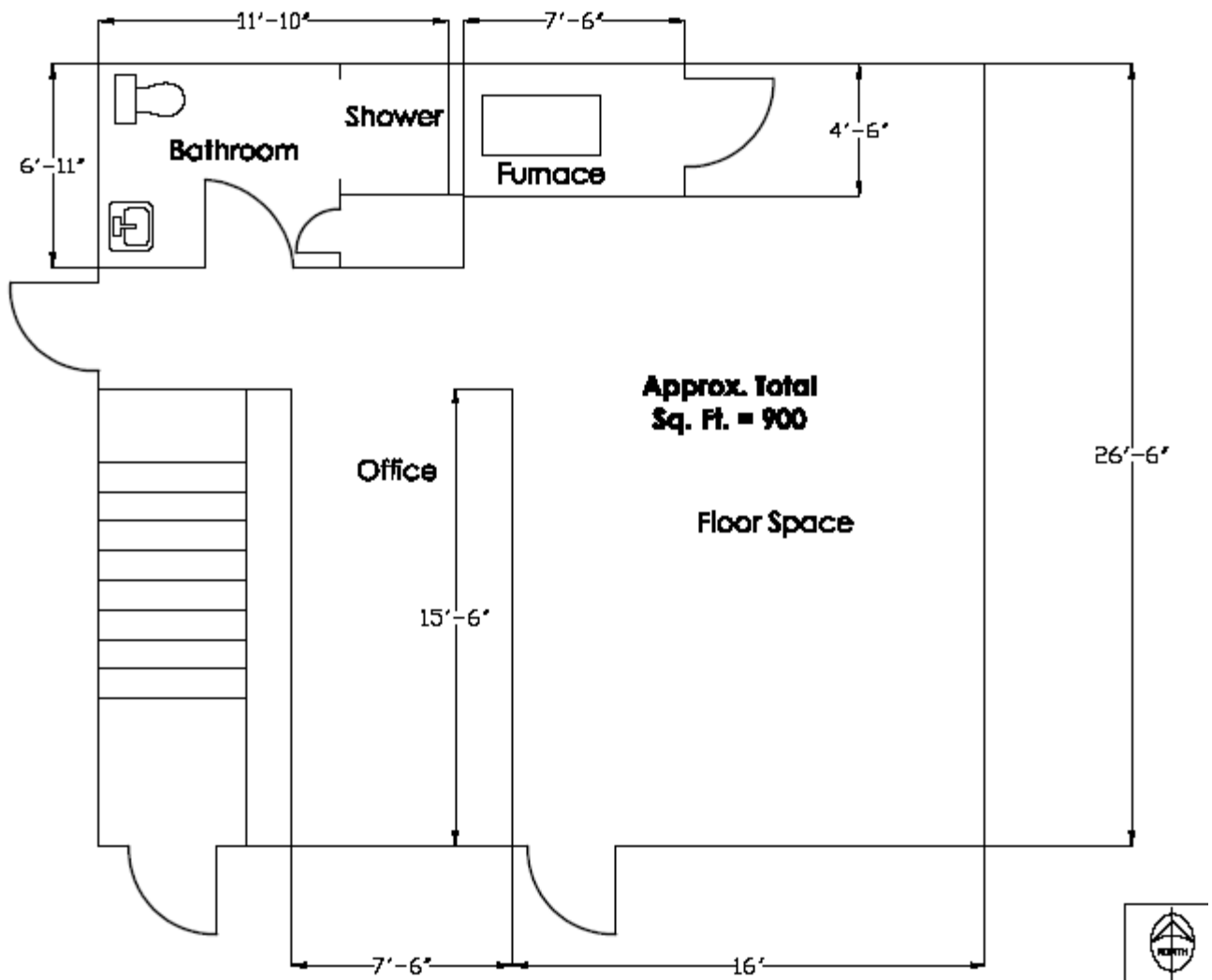


**Suite 1216 &
1218
2,880 Sq. Ft.
\$1,200 per
month**

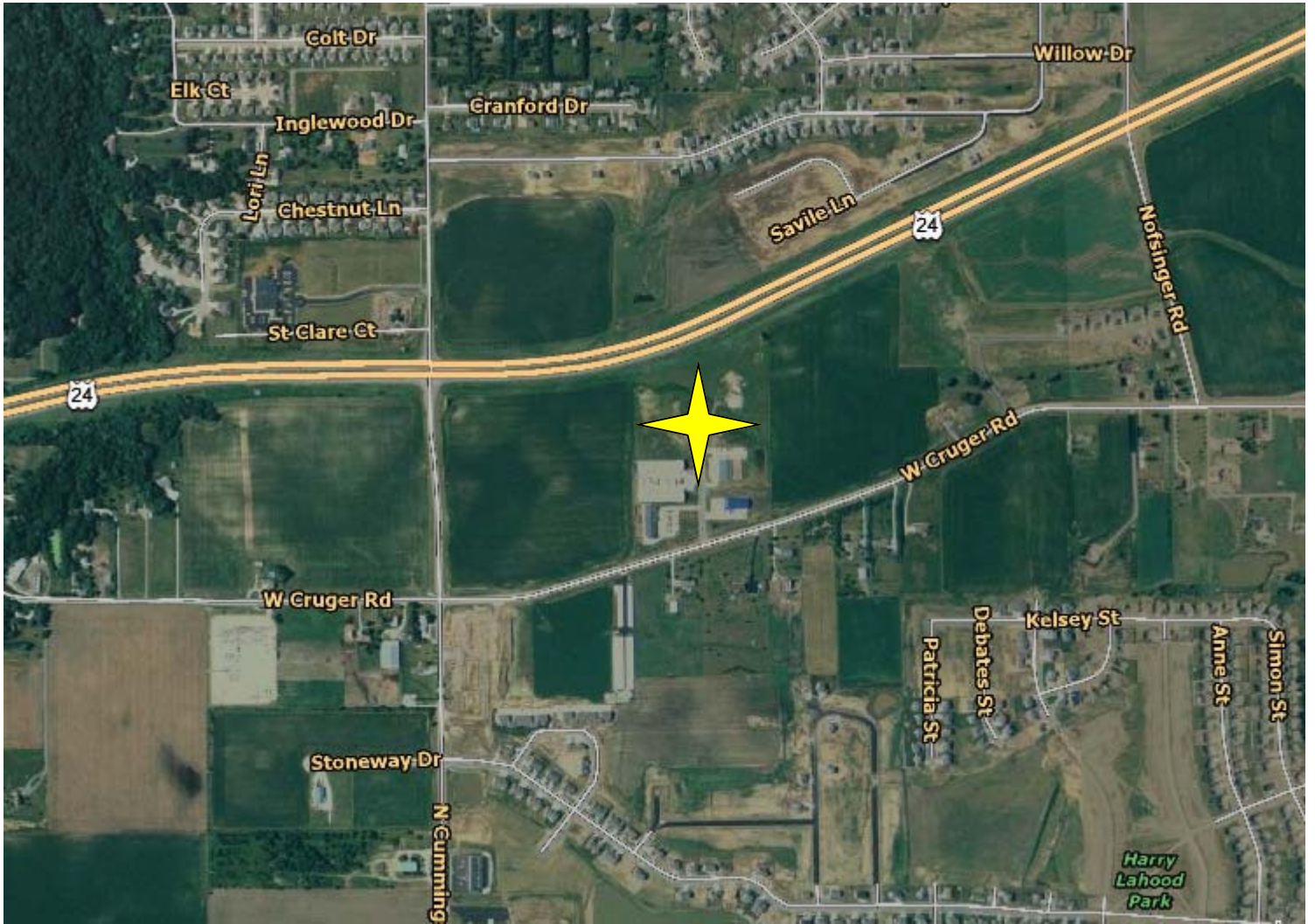
- 1,440 - 2,880 sq. ft. warehouse suites from \$650 per month**
- 900 - 1,000 Sq Ft. office suites from \$650 per month**

Information contained herein has been obtained from the property owner or from other sources that we deem reliable. We have no reason to doubt its accuracy, but we do not guarantee it. Each Office Is Independently Owned and Operated.

North Building



- Suite 1230
- 900 Sq. Ft. with 1,440 Sq. Ft. Warehouse bay attached
- \$1,200 per month + Utilities



Information contained herein has been obtained from the property owner or from other sources that we deem reliable. We have no reason to doubt its accuracy, but we do not guarantee it. Each Office Is Independently Owned and Operated.

RE/MAX

COMMERCIAL

Independence Court Business Park Washington, IL



RE/MAX

COMMERCIAL

RE/MAX Unlimited Commercial

3622 N. Knoxville Avenue

Peoria, IL 61603-1017

Office: 309-687-4903

Fax: 309-687-4980

www.commercialpeoria.com



COMMERCIAL
Real Estate



Information contained herein has been obtained from the property owner or from other sources that we deem reliable. We have no reason to doubt its accuracy, but we do not guarantee it. Each Office Is Independently Owned and Operated.