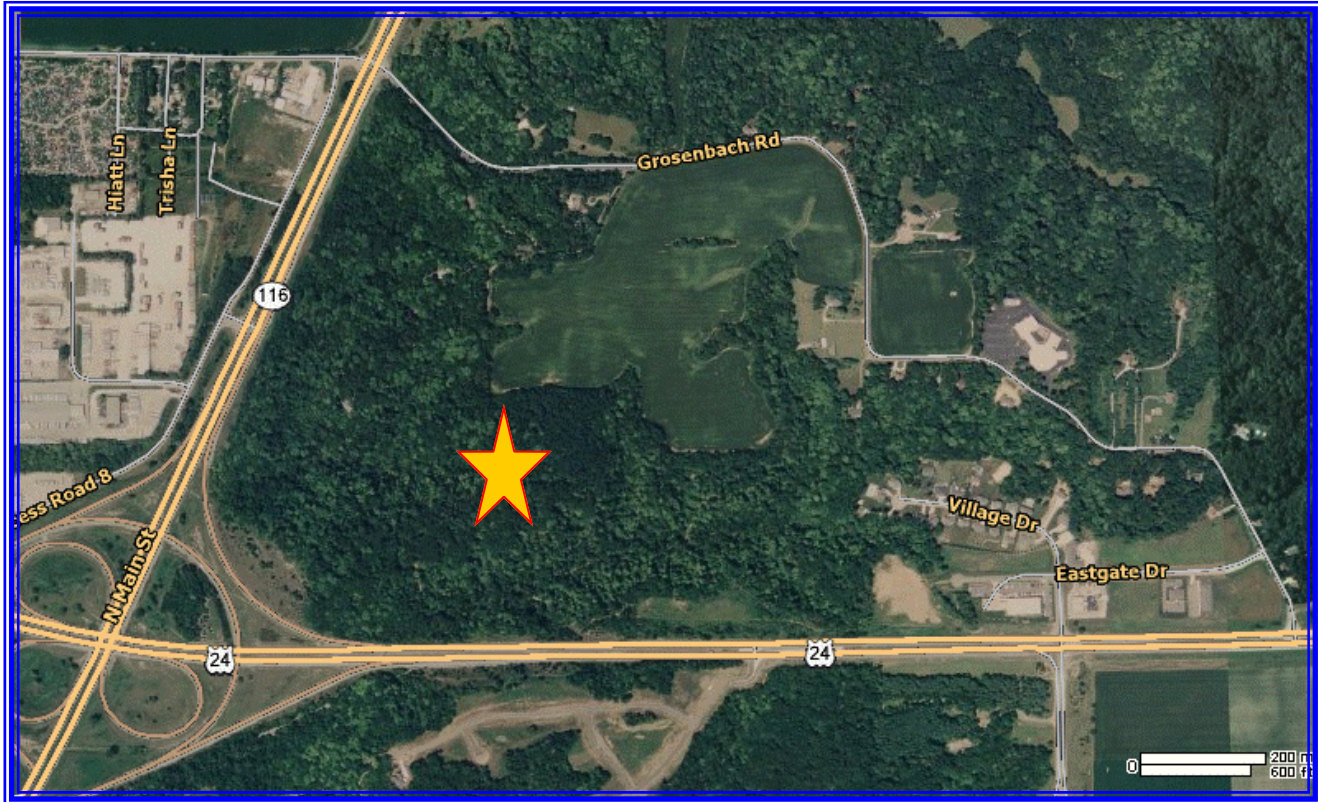


**RE/MAX**

COMMERCIAL

# Development Land For Sale



Jim Grube  
309-696-6110  
jgrube@remax.net

**RE/MAX Unlimited Commercial Division**  
3622 N. Knoxville Avenue  
Peoria, IL 61603  
Office: 309-687-5080  
Fax: 309-687-5078  
[www.commercialpeoria.com](http://www.commercialpeoria.com)



COMMERCIAL  
Real Estate



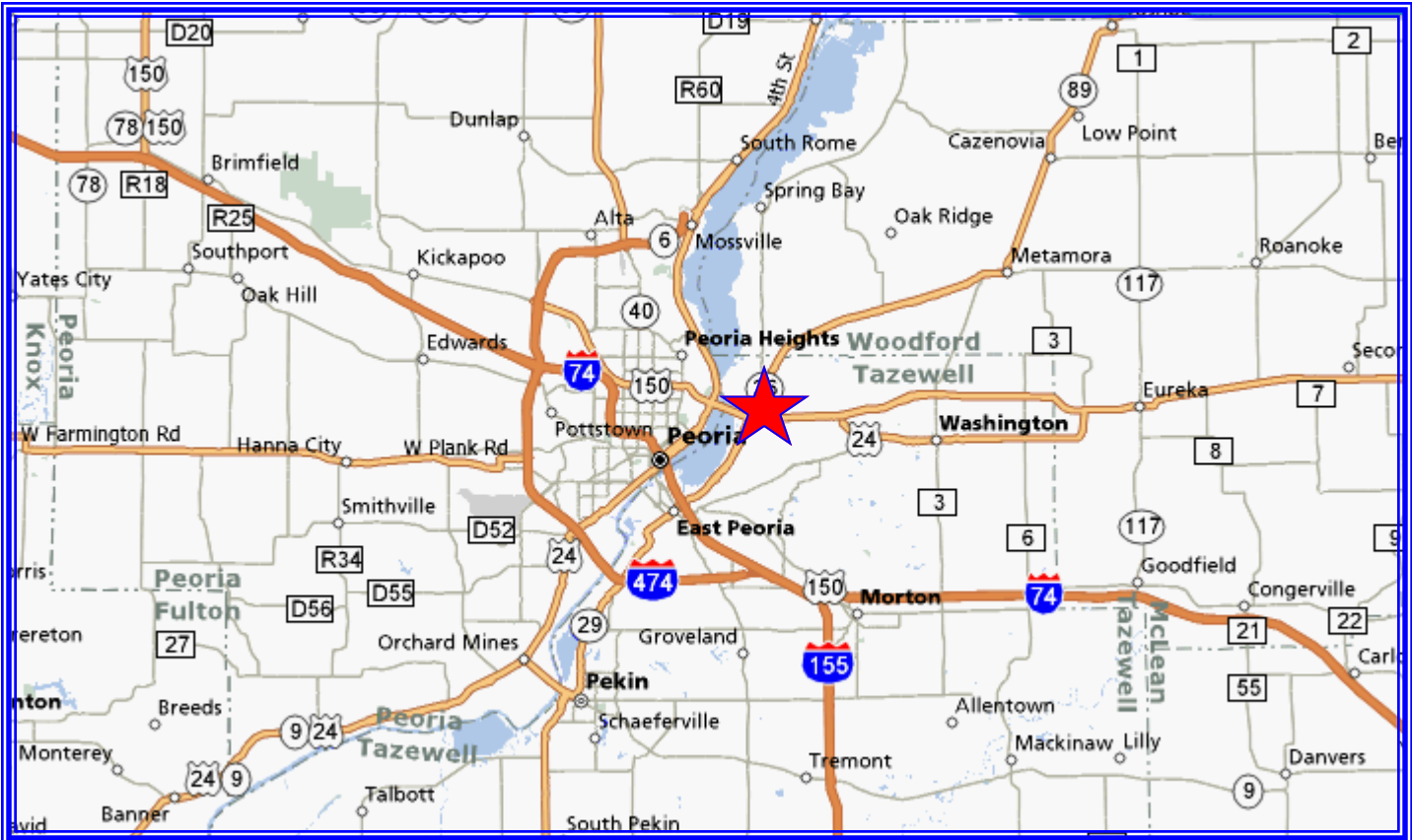
Information contained herein has been obtained from the property owner or from other sources that we deem reliable. We have no reason to doubt its accuracy, but we do not guarantee it. Each Office Is Independently Owned and Operated.

- . 80 Acres**
- . \$20,000 per acre**
- . NE Corner of Rt. 24 & Rt. 116**
- . Potential 33 lot residential subdivision with scenic river views**
- . Potential 14 lot commercial subdivision with access from lighted intersection.**

**RE/MAX**

COMMERCIAL

# Rt. 116 @ Rt. 24 East Peoria, IL



**RE/MAX**

COMMERCIAL

**RE/MAX Unlimited Commercial Division**

3622 N. Knoxville Avenue

Peoria, IL 61603

Office: 309-687-5080

Fax: 309-687-5078

[www.commercialpeoria.com](http://www.commercialpeoria.com)



COMMERCIAL  
Real Estate



Information contained herein has been obtained from the property owner or from other sources that we deem reliable. We have no reason to doubt its accuracy, but we do not guarantee it. Each Office Is Independently Owned and Operated.